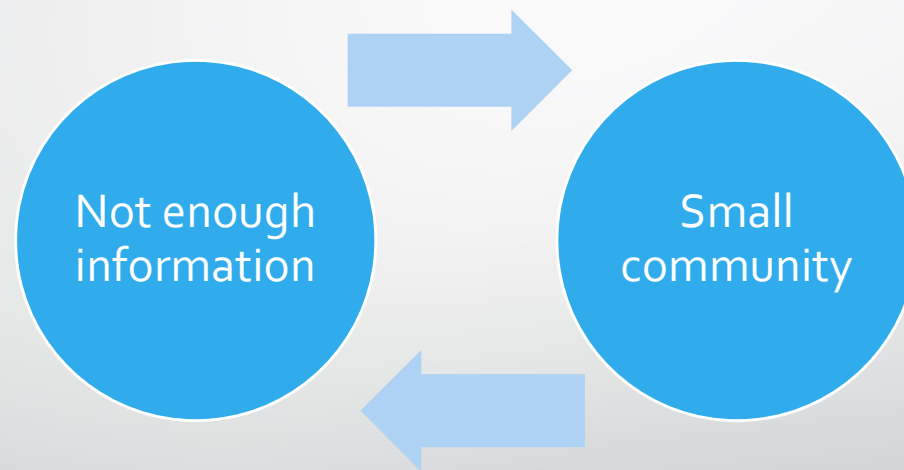




# OpenVMS Online Courses

# We Have a Problem



# VSI Training Options Now

## Classroom

- 5 days in Bolton, MA
- Live instructor
- Student Guides and Lab Guides
- Student accounts provided
- \$3,500 + trip costs (per person)
- Learning in a group
- Not enough time

## Webex

- 5 days anywhere in the world
- Video conferences with an instructor
- Student guides and lab guides
- Student accounts provided
- Time difference
- Learning in a group
- Not enough time



# Introducing Online Courses

- **Study wherever you are, whenever you want, for as long as you need**
- Personalized study plans
- Go at your own pace
- Video lectures and interactive tasks
- Student accounts provided
- Community of instructors and learners



# Introducing Online Courses

- Study wherever you are, whenever you want, for as long as you need
- **Personalized study plans**
- Go at your own pace
- Video lectures and interactive tasks
- Student accounts provided
- Community of instructors and learners



# Introducing Online Courses

- Study wherever you are, whenever you want, for as long as you need
- Personalized study plans
- **Go at your own pace**
- Video lectures and interactive tasks
- Student accounts provided
- Community of instructors and learners



# Introducing Online Courses

- Study wherever you are, whenever you want, for as long as you need
- Personalized study plans
- Go at your own pace
- **Video lectures and interactive tasks**
- Student accounts provided
- Community of instructors and learners



# Introducing Online Courses

- Study wherever you are, whenever you want, for as long as you need
- Personalized study plans
- Go at your own pace
- Video lectures and interactive tasks
- **Student accounts provided**
- Community of instructors and learners





# Introducing Online Courses

- Study wherever you are, whenever you want, for as long as you need
- Personalized study plans
- Go at your own pace
- Video lectures and interactive tasks
- Student accounts provided
- **Community of instructors and learners**



# Introducing Online Courses

- Study wherever you are, whenever you want, for as long as you need
- Personalized study plans
- Go at your own pace
- Video lectures and interactive tasks
- Student accounts provided
- Community of instructors and learners



## All Courses

### OpenVMS Fundamentals

This course teaches students how to use the OpenVMS operating system to create, manipulate, and manage files. It discusses how to tailor the user environment using logical names and DCL symbols. The course describes the command language interpreter and the command line interface. Students

### System Management I - Essentials

Core information and essential skills needed to examine the system, the software and hardware configuration, and the administrative setup already in place, and make modifications.

### Navigation

- Home
- Site announcements
- ▶ Courses



## LOG IN

Username

Password

Remember username

**LOG IN**

[Forgotten your username or password?](#)

Cookies must be enabled in your browser [?](#)

Some courses may allow guest access

**LOG IN AS A GUEST**



### LOG IN

Username

Password

Remember username

**LOG IN**

[Forgotten your username or password?](#)

Cookies must be enabled in your browser [?](#)

Some courses may allow guest access

**LOG IN AS A GUEST**



### LOG IN

Username

Password

Remember username

**LOG IN**

[Forgotten your username or password?](#)

Cookies must be enabled in your browser [?](#)

Some courses may allow guest access

**LOG IN AS A GUEST**

Dashboard

CUSTOMISE THIS PAGE

### Navigation

- Dashboard
  - Site home
  - Site pages
- My courses
  - VMSFund
  - System Management I

### Course Overview

- OpenVMS Fundamentals
- System Management I - Essentials

AUGUST 2017						
Mon	Tue	Wed	Thu	Fri	Sat	Sun
	1	2	3	4	5	6
7	8	9	10	11	12	13
14	15	16	17	18	19	20
21	22	23	24	25	26	27
28	29	30	31			

## Navigation

### Dashboard

- Site home
- Site pages
- My courses

#### VMSFund

- Participants
- Badges
- Competencies
- Grades
- General
- Introduction
- Getting Started
- The DIGITAL Command Language
- Process Concepts
- Directory Files
- File Manipulations
- File Security
- Logical Names
- Editing
- Symbols
- Communications
- Command Procedures
- Print and Batch Jobs
- Networking
- System Management I

## Course Overview

OpenVMS Fundamentals

System Management I - Essentials

AUGUST 2017						
Mon	Tue	Wed	Thu	Fri	Sat	Sun
	1	2	3	4	5	6
7	8	9	10	11	12	13
14	15	16	17	18	19	20
21	22	23	24	25	26	27
28	29	30	31			



Dashboard

[CUSTOMISE THIS PAGE](#)

## Navigation

### Dashboard

- Site home
- Site pages
- My courses
  - VMSFund
    - Participants
    - Badges
    - Competencies
    - Grades
      - General
      - Introduction
      - Getting Started
      - The DIGITAL Command Language
    - Process Concepts**
      - Process Concepts Video Lessons
      - Process Concepts Lab Guide
      - Process Concepts Quiz
    - Directory Files
    - File Manipulations
    - File Security
    - Logical Names
    - Editing
    - Symbols
    - Communications
    - Command Procedures
    - Print and Batch Jobs
    - Networking
  - System Management I

## Course Overview

- OpenVMS Fundamentals
- System Management I - Essentials

Calendar for AUGUST 2017

Mon	Tue	Wed	Thu	Fri	Sat	Sun
	1	2	3	4	5	6
7	8	9	10	11	12	13
14	15	16	17	18	19	20
21	22	23	24	25	26	27
28	29	30	31			

### Lesson Menu

- Process Context (13:14)
- Interactive Process (6:03)
- Batch Process (6:57)
- Detached Process (2:34)
- Subprocess (10:17)
- Process Information (7:14)
- Changing Process Prompt (1:47)

### Navigation

- Dashboard
  - Site home
  - Site pages
- My courses
  - VMSFund
    - Participants
    - Badges
    - Competencies
    - Grades
    - General
    - Introduction
    - Getting Started
    - The DIGITAL Command Language
    - Process Concepts
      - Process Concepts Video Lessons**
      - Process Concepts Lab Guide
      - Process Concepts Quiz
    - Directory Files

## Process Concepts Video Lessons

### Process Context (13:14)



The video player displays the 'vms Software' logo in the top left and 'OpenVMS Fundamentals' in the top right. The main content of the video is the text 'Process Context' centered on a black background.

NEXT

### Lesson Menu

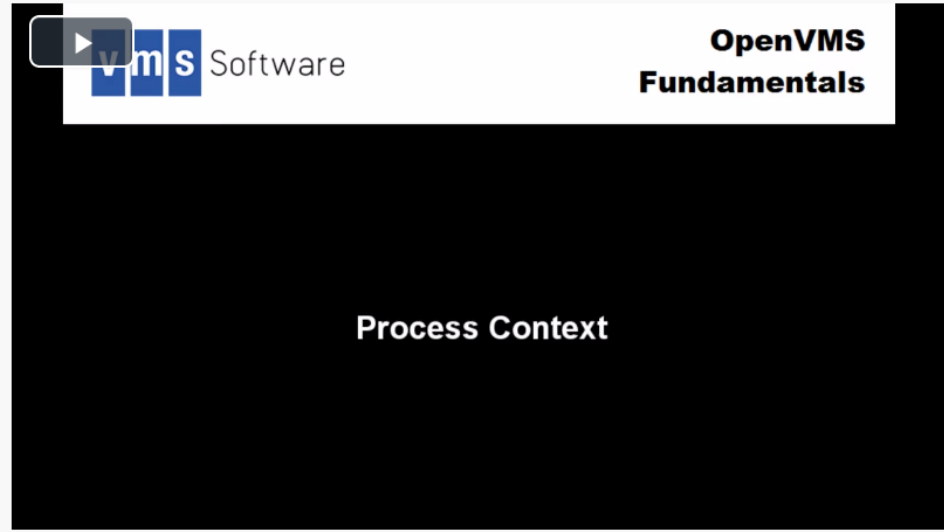
- Process Context (13:14)
- Interactive Process (6:03)
- Batch Process (6:57)
- Detached Process (2:34)
- Subprocess (10:17)
- Process Information (7:14)
- Changing Process Prompt (1:47)

### Navigation

- Dashboard
  - Site home
  - Site pages
- My courses
  - VMSFund
    - Participants
    - Badges
    - Competencies
    - Grades
    - General
    - Introduction
    - Getting Started
    - The DIGITAL Command Language
    - Process Concepts
      - Process Concepts Video Lessons
      - Process Concepts Lab Guide
      - Process Concepts Quiz
    - Directory Files

## Process Concepts Video Lessons

### Process Context (13:14)



OpenVMS Fundamentals

Process Context

NEXT

### Lesson Menu

- Process Context (13:14)
- Interactive Process (6:03)
- Batch Process (6:57)
- Detached Process (2:34)
- Subprocess (10:17)
- Process Information (7:14)
- Changing Process Prompt (1:47)

### Navigation

- Dashboard
  - Site home
  - Site pages
- My courses
  - VMSFund
    - Participants
    - Badges
    - Competencies
    - Grades
    - General
    - Introduction
    - Getting Started
    - The DIGITAL Command Language
    - Process Concepts
      - Process Concepts Video Lessons
      - Process Concepts Lab Guide
      - Process Concepts Quiz
    - Directory Files

## Process Concepts Video Lessons

### Process Context (13:14)

vms Software

OpenVMS Fundamentals

Process Context

11 [Volume] -13:13 [Full Screen]

NEXT

## Lesson Menu

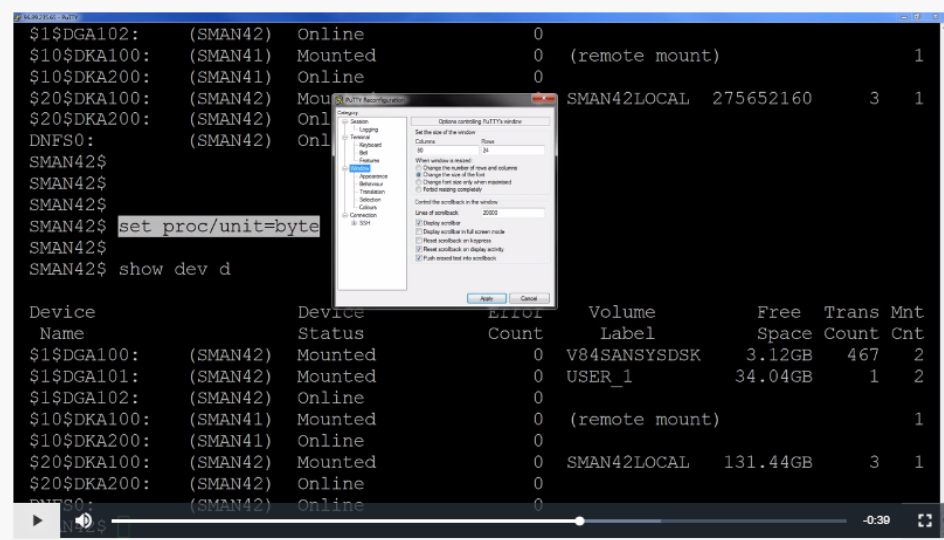
- Process Context (13:14)
- Interactive Process (6:03)
- Batch Process (6:57)
- Detached Process (2:34)
- Subprocess (10:17)
- Process Information (7:14)
- Changing Process Prompt (1:47)

## Navigation

- Dashboard
  - Site home
  - Site pages
- My courses
  - VMSFund
    - Participants
    - Badges
    - Competencies
    - Grades
    - General
    - Introduction
    - Getting Started
    - The DIGITAL Command Language
    - Process Concepts
      - Process Concepts Video Lessons
      - Process Concepts Lab Guide
      - Process Concepts Quiz
    - Directory Files

## Process Concepts Video Lessons

### Changing Process Prompt (1:47)



The screenshot shows a terminal window with the following output:

```
$1$DGA102: (SMAN42) Online 0
$10$DKA100: (SMAN41) Mounted 0 (remote mount) 1
$10$DKA200: (SMAN41) Online 0
$20$DKA100: (SMAN42) Mounted 0
$20$DKA200: (SMAN42) Online 0
DNFS0: (SMAN42) Online 0
SMAN42$
SMAN42$
SMAN42$
SMAN42$ set proc/unit=byte
SMAN42$
SMAN42$
SMAN42$ show dev d
```

Below the terminal output is a table of device information:

Device Name	Device Status	Device Count	Volume Label	Free Space	Trans Count	Mnt Cnt
\$1\$DGA100:	(SMAN42) Mounted	0	V84SANSYSDSK	3.12GB	467	2
\$1\$DGA101:	(SMAN42) Mounted	0	USER_1	34.04GB	1	2
\$1\$DGA102:	(SMAN42) Online	0				
\$10\$DKA100:	(SMAN41) Mounted	0	(remote mount)			1
\$10\$DKA200:	(SMAN41) Online	0				
\$20\$DKA100:	(SMAN42) Mounted	0	SMAN42LOCAL	131.44GB	3	1
\$20\$DKA200:	(SMAN42) Online	0				
DNFS0:	(SMAN42) Online	0				

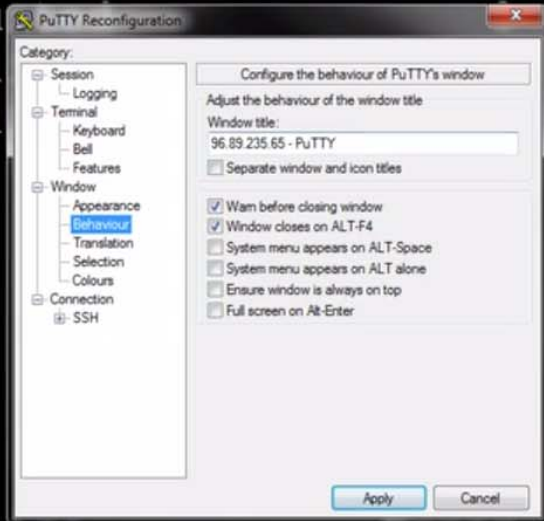
A dialog box titled 'Quality Assurance' is overlaid on the terminal, showing options for controlling the window's appearance and behavior.

FINISH

```

$1$DGA102:      (SMAN42)  Online           0
$10$DKA100:     (SMAN41)  Mounted         0 (remote mount) 1
$10$DKA200:     (SMAN41)  Online          0
$20$DKA100:     (SMAN42)  Mounted         0 SMAN42LOCAL    275652160      3 1
$20$DKA200:     (SMAN42)  Online          0
DNFS0:          (SMAN42)  Online          0
SMAN42$
SMAN42$
SMAN42$
SMAN42$ set proc/unit=byte
SMAN42$
SMAN42$ show dev d

```



Device Name	Device Status	Device Count	Volume Label	Free Space	Trans Count	Mnt Cnt
\$1\$DGA100: (SMAN42)	Mounted	0	V84SANSYSDSK	3.12GB	467	2
\$1\$DGA101: (SMAN42)	Mounted	0	USER_1	34.04GB	1	2
\$1\$DGA102: (SMAN42)	Online	0				
\$10\$DKA100: (SMAN41)	Mounted	0	(remote mount)			1
\$10\$DKA200: (SMAN41)	Online	0				
\$20\$DKA100: (SMAN42)	Mounted	0	SMAN42LOCAL	131.44GB		
\$20\$DKA200: (SMAN42)	Online	0				
DNFS0: (SMAN42)	Online	0				

Changing Process Prompt



```
$20$DKA100: (SMAN42) Mounted
$20$DKA200: (SMAN42) Online
DNFS0: (SMAN42) Online
SMAN42$
SMAN42$
```

Configure the permissions of /usr/lib/modules

Select the permissions of the window file

Permissions:

- Read
- Write
- Execute
- Search
- Execute and search

Options:

- Apply to subdirectories
- Apply to files
- Apply to both

Buttons: Apply, Cancel

- Dashboard
  - Site home
  - Site pages
- My courses
  - VMSFund
    - Participants
    - Badges
    - Competencies
    - Grades
      - General
      - Introduction
      - Getting Started
      - The DIGITAL Command Language
    - Process Concepts
      - Process Concepts Video Lessons
      - Process Concepts Lab Guide
      - Process Concepts Quiz
    - Directory Files
    - File Manipulations
    - File Security
    - Logical Names
    - Editing
    - Symbols
    - Communications
    - Command Procedures
    - Print and Batch Jobs
    - Networking
  - System Management I

```
SMAN42$ SHOW DEV D
```

Device Name	Device Status	Volume Label	Free Space	Trans Count	Mnt Cnt
\$1\$DGA100:	(SMAN42) Mounted	V84SANSYSDSK	3.12GB	467	2
\$1\$DGA101:	(SMAN42) Mounted	USER_1	34.04GB	1	2
\$1\$DGA102:	(SMAN42) Online				
\$10\$DKA100:	(SMAN41) Mounted	(remote mount)			1
\$10\$DKA200:	(SMAN41) Online				
\$20\$DKA100:	(SMAN42) Mounted	SMAN42LOCAL	131.44GB	3	1
\$20\$DKA200:	(SMAN42) Online				
DNFS0:	(SMAN42) Online				

FINISH

## Lesson Menu

- Instructions
- Viewing Process Information
- Changing Process Name
- Memory Display Settings
- Changing the Prompt
- Spawning Subprocesses
- Navigating between Subprocesses
- Attaching to a Subprocess
- Subprocess Levels

## Navigation

- Dashboard
  - Site home
  - Site pages
- My courses
  - VMSFund
    - Participants
    - Badges
    - Competencies
    - Grades
      - General
      - Introduction
      - Getting Started
      - The DIGITAL Command Language
    - Process Concepts
      - Process Concepts Video Lessons
      - Process Concepts Lab Guide

## Process Concepts Lab Guide

### Instructions

For these exercises, you will need to log in to your OpenVMS system and follow the instructions. Throughout the lab guide, follow the instructions and press "Check" or "Next" when you are ready to check your answers. Try to find the answers by yourself before opening the next page.

**GOT IT**



VMSFund: Process Concepts

Secure | https://www.brudenossg.com:8443/mod/lesson/view.php?id=127&pageid=678

# vms Software

John Doe

Dashboard / My courses / VMSFund / Process Concepts / Process Concepts Lab Guide

## Lesson Menu

- Instructions
- Viewing Process Information
- Changing Process Name
- Memory Display Settings
- Changing the Prompt
- Spawning Subprocesses
- Navigating between Subprocesses
- Attaching to a Subprocess
- Subprocess Levels

## Navigation

- Dashboard
  - Site home
  - Site pages
- My courses
  - VMSFund
    - Participants
    - Badges
    - Competencies
    - Grades
      - General
      - Introduction
      - Getting Started
    - The DIGITAL

## Process Concepts Lab Guide

### Instructions

For these exercises, you will need to log in to your OpenVMS system and follow the instructions. Throughout the lab guide, follow the instructions and press "Check" or "Next" when you are ready to check your answers. Try to find the answers by yourself before opening the next page.

**GOT IT**

96.89.235.65 - PuTTY

VMSFund: Process Concepts

Secure | https://www.brudenossg.com:8443/mod/lesson/view.php?id=127&pageid=679

# vms Software

John Doe

Dashboard / My courses / VMSFund / Process Concepts / Process Concepts Lab Guide

## Lesson Menu

- Instructions
- Viewing Process Information
- Changing Process Name
- Memory Display Settings
- Changing the Prompt
- Spawning Subprocesses
- Navigating between Subprocesses
- Attaching to a Subprocess
- Subprocess Levels

## Navigation

- Dashboard
  - Site home
  - Site pages
- My courses
  - VMSFund
    - Participants
    - Badges
    - Competencies
    - Grades
      - General
      - Introduction
      - Getting Started
      - The DIGITAL

## Process Concepts Lab Guide

### Viewing Process Information

See if you can find answers to the following questions:

- What is your process name?
- What is your PID (Process Identification Number)?
- What is your terminal ID?
- What node are you on?
- What is your user identifier?
- What is your default directory?
- What command did you use to get this information?
- How long have you been connected to the system?
- What are your authorized privileges?
- How many images have you activated?

Press "Check" when you are ready to check your answers.

**CHECK**

96.89.235.65 - PuTTY

```
$
```

VMS Fund: Process Concepts

Secure | https://www.brudenossg.com:8443/mod/lesson/view.php?id=127&pageid=679

# vms Software

John Doe

Dashboard / My courses / VMSFund / Process Concepts / Process Concepts Lab Guide

## Lesson Menu

- Instructions
- Viewing Process Information
- Changing Process Name
- Memory Display Settings
- Changing the Prompt
- Spawning Subprocesses
- Navigating between Subprocesses
- Attaching to a Subprocess
- Subprocess Levels

## Navigation

- Dashboard
  - Site home
  - Site pages
- My courses
  - VMSFund
    - Participants
    - Badges
    - Competencies
    - Grades
      - General
      - Introduction
      - Getting Started
    - The DIGITAL

## Process Concepts Lab Guide

### Viewing Process Information

See if you can find answers to the following questions:

- What is your process name?
- What is your PID (Process Identification Number)?
- What is your terminal ID?
- What node are you on?
- What is your user identifier?
- What is your default directory?
- What command did you use to get this information?
- How long have you been connected to the system?
- What are your authorized privileges?
- How many images have you activated?

Press "Check" when you are ready to check your answers.

**CHECK**

```
96.89.235.65 - PuTTY
$ show process
30-AUG-2017 01:49:59.05  User: FUND102          Process ID: 000CE99B
                        Node: SMAN40          Process name: "FUND102"

Terminal:                FTA460:
User Identifier:         [FUND102]
Base priority:          4
Default file spec:      USER1:[FUND102]
Number of Kthreads:     1 (System-wide limit: 2)

Devices allocated:      SMAN40$FTA460:
$
```

VMS Fund: Process Concepts

Secure | https://www.brudenossg.com:8443/mod/lesson/view.php?id=127&pageid=680

# vms Software

John Doe

Dashboard / My courses / VMSFund / Process Concepts / Process Concepts Lab Guide

## Lesson Menu

- Instructions
- Viewing Process Information
- Changing Process Name
- Memory Display Settings
- Changing the Prompt
- Spawning Subprocesses
- Navigating between Subprocesses
- Attaching to a Subprocess
- Subprocess Levels

## Navigation

- Dashboard
- Site home
- Site pages
- My courses
  - VMSFund
    - Participants
    - Badges
    - Competencies
    - Grades
    - General
    - Introduction
    - Getting Started

## Process Concepts Lab Guide

### Viewing Process Information Check

Here are the commands that you need to view your process information:

Process name, PID, node, and user identifier:

```
$ show process
18-APR-2017 07:28:37.81  User: FUND102      Process ID: 204004CD
                          Node: SMAN42      Process name: "FUND102"

Terminal:      TNA61: (Host: SMAN40 Locn: _FTA48:/FUND102)
User Identifier: [VMSBASE,FUND102]
Base priority: 4
Default file spec: USER$1:[FUND102]
Number of Kthreads: 1 (System-wide limit: 2)

Devices allocated: TNA61:
$
```

The current default directory:

```
$ show default
USER$1:[FUND102]
$
```

Images activated and connect time:

```
$ show process/accounting
18-APR-2017 07:30:02.24  User: FUND102      Process ID: 204004CD
                          Node: SMAN42      Process name: "FUND102"

Accounting information:
Buffered I/O count:      938  Peak working set size:      6560
Direct I/O count:       109  Peak virtual size:          177856
Page faults:            1843  Mounted volumes:             0
Images activated:       24
Elapsed CPU time:       0 00:00:00.12
Connect time:           0 01:23:22.58
```

96.89.235.65 - PuTTY

```
$ show process
30-AUG-2017 01:49:59.05  User: FUND102      Process ID: 000CE99B
                          Node: SMAN40      Process name: "FUND102"

Terminal:      FTA460:
User Identifier: [FUND102]
Base priority: 4
Default file spec: USER1:[FUND102]
Number of Kthreads: 1 (System-wide limit: 2)

Devices allocated: SMAN40$FTA460:
$
```

VMS Fund: Process Concepts

Secure | https://www.brukenossg.com:8443/mod/lesson/view.php?id=127&pageid=680

# vms Software

Number of Kthreads: 1 (System-wide limit: 2)  
Devices allocated: TNA61:

John Doe

- Site home
- Site pages
- My courses
  - VMSFund
    - Participants
    - Badges
    - Competencies
    - Grades
      - General
      - Introduction
      - Getting Started
        - The DIGITAL
        - Command Language
    - Process Concepts
      - Process
        - Concepts Video Lessons
        - Process Concepts Lab Guide
        - Process Concepts Quiz
    - Directory Files
    - File Manipulations
    - File Security
    - Logical Names
    - Editing
    - Symbols
    - Communications
    - Command Procedures
      - Print and Batch Jobs
      - Networking
      - System Management I

Images activated and connect time:

```

$ show process/accounting
18-APR-2017 07:30:02.24  User: FUND102      Process ID: 204004CD
                          Node: SMAN42        Process name: "FUND102"

Accounting information:
Buffered I/O count:      938  Peak working set size:    6560
Direct I/O count:       109  Peak virtual size:       177856
Page faults:           1843  Mounted volumes:         0
Images activated:        24
Elapsed CPU time:        0 00:00:00.12
Connect time:           0 01:23:22.98
$
  
```

The authorized privileges:

```

$ show process/privileges
18-APR-2017 07:30:52.04  User: FUND102      Process ID: 204004CD
                          Node: SMAN42        Process name: "FUND102"

Authorized privileges:
NETMBX      OPER      TMPMBX

Process privileges:
NETMBX      may create network device
TMPMBX      may create temporary mailbox

Process rights:
FUND102      resource
INTERACTIVE
REMOTE

System rights:
SYS$NODE_SMAN42
$
  
```

NEXT

96.89.235.65 - PuTTY

```

$ show process
30-AUG-2017 01:49:59.05  User: FUND102      Process ID: 000CE99B
                          Node: SMAN40        Process name: "FUND102"

Terminal:      FTA460:
User Identifier: [FUND102]
Base priority: 4
Default file spec: USER1:[FUND102]
Number of Kthreads: 1 (System-wide limit: 2)

Devices allocated: SMAN40$FTA460:
$
  
```

### Navigation

- Dashboard
  - Site home
  - Site pages
  - My courses
    - VMSFund
      - Participants
      - Badges
      - Competencies
      - Grades
      - General
        - Announcements
        - OpenVMS Fundamentals Forum**
        - OpenVMS Fundamentals Glossary
        - OpenVMS User's Guide
        - What do you think about this course?
      - Introduction
      - Getting Started
      - The DIGITAL Command Language
      - Process Concepts
      - Directory Files
      - File Manipulations
      - File Security
      - Logical Names
      - Editing
      - Symbols
      - Communications
      - Command Procedures
      - Print and Batch Jobs
      - Networking
      - System Management I

## OpenVMS Fundamentals Forum

Ask your questions and answer questions asked by other students.

[ADD A NEW DISCUSSION TOPIC](#)

Discussion	Started by	Replies	Last post
Useful symbol suggestions	Jack Mitchell	4	Jack Mitchell  Thu, 24 Aug 2017, 11:37 PM
Delete Files after a Specified Time	Jack Mitchell	0	Jack Mitchell • Thu, 24 Aug 2017, 11:36 PM
Lexical Function to Look Up Logicals	Jack Mitchell	0	Jack Mitchell • Thu, 24 Aug 2017, 11:18 PM
Writing changes to the same file	Mary Sue	2	Jack Mitchell • Thu, 24 Aug 2017, 9:18 PM
Where are my symbols?	Lillian Ellison	2	Jack Mitchell • Thu, 24 Aug 2017, 1:16 AM
Incorrect LOGIN.COM settings	Mary Sue	1	Jane Doe • Thu, 24 Aug 2017, 1:11 AM
Recursive copying	Mary Sue	1	Jane Doe • Thu, 24 Aug 2017, 1:09 AM
Mark a mail message as read	Mary Sue	1	Jane Doe • Thu, 24 Aug 2017, 1:07 AM
Can't send mail to OpenVMS	John Doe	1	Jane Doe  Wed, 23 Aug 2017, 5:08 AM
Find a penpal for exploring the Mail Utility	Jane Doe	3	Lillian Ellison  Tue, 22 Aug 2017, 10:22 PM

### Navigation ☰

- Dashboard
  - Site home
  - ▶ Site pages
  - ▼ My courses
    - ▼ VMSFund
      - ▶ Participants
      - 🏆 Badges
      - 🏆 Competencies
      - 📅 Grades
      - ▼ General
        - 📢 Announcements
        - 🗨️ **OpenVMS Fundamentals Forum**
        - 📖 OpenVMS Fundamentals Glossary
        - 📖 OpenVMS User's Guide
        - 🗨️ What do you think about this course?
      - ▶ Introduction
      - ▶ Getting Started
      - ▶ The DIGITAL Command Language
      - ▶ Process Concepts
      - ▶ Directory Files
      - ▶ File Manipulations
      - ▶ File Security
      - ▶ Logical Names
      - ▶ Editing
      - ▶ Symbols
      - ▶ Communications
      - ▶ Command Procedures
      - ▶ Print and Batch Jobs
      - ▶ Networking
      - ▶ System Management I

## OpenVMS Fundamentals Forum

Ask your questions and answer questions asked by other students.

[ADD A NEW DISCUSSION TOPIC](#)

Discussion	Started by	Replies	Last post
Useful symbol suggestions	Jack Mitchell	4	Jack Mitchell  Thu, 24 Aug 2017, 11:37 PM
Delete Files after a Specified Time	Jack Mitchell	0	Jack Mitchell • Thu, 24 Aug 2017, 11:36 PM
Lexical Function to Look Up Logicals	Jack Mitchell	0	Jack Mitchell • Thu, 24 Aug 2017, 11:18 PM
Writing changes to the same file	Mary Sue	2	Jack Mitchell • Thu, 24 Aug 2017, 9:18 PM
Where are my symbols?	Lillian Ellison	2	Jack Mitchell • Thu, 24 Aug 2017, 1:16 AM
Incorrect LOGIN.COM settings	Mary Sue	1	Jane Doe • Thu, 24 Aug 2017, 1:11 AM
Recursive copying	Mary Sue	1	Jane Doe • Thu, 24 Aug 2017, 1:09 AM
Mark a mail message as read	Mary Sue	1	Jane Doe • Thu, 24 Aug 2017, 1:07 AM
Can't send mail to OpenVMS	John Doe	1	Jane Doe  Wed, 23 Aug 2017, 5:08 AM
Find a penpal for exploring the Mail Utility	Jane Doe	3	Lillian Ellison  Tue, 22 Aug 2017, 10:22 PM

## Navigation

- Dashboard
  - Site home
  - Site pages
- My courses
  - VMSFund**
    - Participants
    - Badges
    - Competencies
    - Grades
    - General
    - Introduction
    - Getting Started
    - The DIGITAL Command Language
    - Process Concepts
    - Directory Files
    - File Manipulations
    - File Security
    - Logical Names
    - Editing
    - Symbols
    - Communications
    - Command Procedures
    - Print and Batch Jobs
    - Networking
    - System Management I

## Forums

### Search results

No posts

Please enter search terms into one or more of the following fields:

These words can appear anywhere in the post

This exact phrase must appear in the post

These words should NOT be included

These words should appear as whole words

Posts must be newer than this  1 January 2000 00 00

Posts must be older than this  25 August 2017 04 50

Choose which forums to search

These words should be in the subject

This name should match the author

SEARCH FORUMS



## Navigation

- Dashboard
  - Site home
  - Site pages
- My courses
  - VMSFund
    - Participants
    - Badges
    - Competencies
    - Grades
    - General
      - Announcements
      - OpenVMS Fundamentals Forum**
      - OpenVMS Fundamentals Glossary
      - OpenVMS User's Guide
      - What do you think about this course?
    - Introduction
    - Getting Started
    - The DIGITAL Command Language
    - Process Concepts
    - Directory Files
    - File Manipulations
    - File Security
    - Logical Names
    - Editing
    - Symbols
    - Communications
    - Command Procedures
    - Print and Batch Jobs
    - Networking
    - System Management I

## OpenVMS Fundamentals Forum

Ask your questions and answer questions asked by other students.

### ▼ Your new discussion topic

Subject\*

Message\*

Discussion subscription

Attachment

Maximum size for new files: 500KB, maximum attachments: 9

## Navigation

- Dashboard
  - Site home
  - Site pages
- My courses
  - VMSFund
    - Participants
    - Badges
    - Competencies
    - Grades
    - General
      - Announcements
      - OpenVMS Fundamentals Forum**
      - OpenVMS Fundamentals Glossary
      - OpenVMS User's Guide
      - What do you think about this course?
    - Introduction
    - Getting Started
    - The DIGITAL Command Language
    - Process Concepts
    - Directory Files
    - File Manipulations
    - File Security
    - Logical Names
    - Editing
    - Symbols
    - Communications
    - Command Procedures
    - Print and Batch Jobs
    - Networking
    - System Management I

## OpenVMS Fundamentals Forum

Ask your questions and answer questions asked by other students.

### ▼ Your new discussion topic

Subject\*

Message\* 

My SHOW PROCESS/PRIVILEGES lists TMPMBX, "may create temporary mailbox". What does this mean?

Discussion subscription

Attachment

Maximum size for new files: 500KB, maximum attachments: 9



Files

Message\*



My SHOW PROCESS/PRIVILEGES lists TMPMBX. "may create temporary mailbox". What does this mean?

- OpenVMS Fundamentals Forum
  - OpenVMS Fundamentals Glossary
  - OpenVMS User's Guide
  - What do you think about this course?
  - Introduction
  - Getting Started
  - The DIGITAL Command Language
  - Process Concepts
  - Directory Files
  - File Manipulations
  - File Security
  - Logical Names
  - Editing
  - Symbols
  - Communications
  - Command Procedures
  - Print and Batch Jobs
  - Networking
  - System Management I

### Administration

- Forum administration
  - Optional subscription
  - Subscribe to this forum

Discussion subscription

Attachment

Maximum size for new files: 500KB, maximum attachments: 9

Files

You can drag and drop files here to add them.

**POST TO FORUM** **CANCEL**

There are required fields in this form marked \*.

### Navigation

- Dashboard
  - Site home
  - Site pages
- My courses
  - VMSFund
    - Participants
    - Badges
    - Competencies
    - Grades
    - General
      - Announcements
      - OpenVMS Fundamentals Forum**
      - OpenVMS Fundamentals Glossary
      - OpenVMS User's Guide
      - What do you think about this course?
    - Introduction
    - Getting Started
    - The DIGITAL Command Language
    - Process Concepts
    - Directory Files
    - File Manipulations
    - File Security
    - Logical Names
    - Editing
    - Symbols
    - Communications
    - Command Procedures
    - Print and Batch Jobs
    - Networking
    - System Management I

Your post was successfully added.  
 You have 30 mins to edit it if you want to make any changes.  
 John Doe will be notified of new posts in 'Temporary Mailboxes' of 'OpenVMS Fundamentals Forum'

## OpenVMS Fundamentals Forum

Ask your questions and answer questions asked by other students.

[ADD A NEW DISCUSSION TOPIC](#)

Discussion	Started by	Replies	Last post
Temporary Mailboxes	John Doe	0	John Doe Fri, 25 Aug 2017, 3:50 AM
Useful symbol suggestions	Jack Mitchell	4	Jack Mitchell Thu, 24 Aug 2017, 11:37 PM
Delete Files after a Specified Time	Jack Mitchell	0	Jack Mitchell • Thu, 24 Aug 2017, 11:36 PM
Lexical Function to Look Up Logicals	Jack Mitchell	0	Jack Mitchell • Thu, 24 Aug 2017, 11:18 PM
Writing changes to the same file	Mary Sue	2	Jack Mitchell • Thu, 24 Aug 2017, 9:18 PM
Where are my symbols?	Lillian Ellison	2	Jack Mitchell • Thu, 24 Aug 2017, 1:16 AM
Incorrect LOGIN.COM settings	Mary Sue	1	Jane Doe • Thu, 24 Aug 2017, 1:11 AM
Recursive copying	Mary Sue	1	Jane Doe • Thu, 24 Aug 2017, 1:09 AM
Mark a mail message as read	Mary Sue	1	Jane Doe • Thu, 24 Aug 2017, 1:07 AM



```
$ show default
USER$1: [FUND102]
$
```

Images activated and connect time:

- Grades
- General
- Introduction
- Getting Started
- The DIGITAL Command Language
- Process Concepts
  - Process Concepts Video Lessons
  - Process Concepts Lab Guide
  - Process Concepts Quiz
- Directory Files
- File Manipulations
- File Security
- Logical Names
- Editing
- Symbols
- Communications
- Command Procedures
- Print and Batch Jobs
- Networking
- System Management I

```
Node: SMAN42          Process name: "FUND102"

Accounting information:
Buffered I/O count:    938  Peak working set size:    6560
Direct I/O count:     109  Peak virtual size:         177856
Page faults:          1843  Mounted volumes:           0
Images activated:      24
Elapsed CPU time:      0 00:00:00.12
Connect time:         0 01:23:22.58
$
```

The authorized privileges:

```
$ show process/privileges

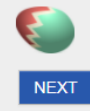
18-APR-2017 07:30:52.04  User: FUND102          Process ID: 204004CD
                        Node: SMAN42          Process name: "FUND102"

Authorized privileges:
NETMBX  OPER      TMPMBX

Process privileges:
NETMBX  may create network device
TMPMBX  may create temporary mailbox

Process rights:
FUND102          resource
INTERACTIVE
REMOTE

System rights:
SYS$NODE_SMAN42
$
```



## Navigation

- Dashboard
  - Site home
  - Site pages
- My courses
  - VMSFund
    - Participants
    - Badges
    - Competencies
    - Grades
      - General
      - Introduction
      - Getting Started
      - The DIGITAL Command Language
    - Process Concepts
      - Process Concepts Video Lessons
      - Process Concepts Lab Guide
      - Process Concepts Quiz**
    - Directory Files
    - File Manipulations
    - File Security
    - Logical Names
    - Editing
    - Symbols
    - Communications
    - Command Procedures
    - Print and Batch Jobs
    - Networking
    - System Management I

## Process Concepts Quiz

Test your knowledge of process concepts

Grading method: Highest grade

**ATTEMPT QUIZ NOW**



### Quiz Navigation



Finish attempt ...

#### Question 1

Not yet answered

Marked out of 1.00

Flag question

Fill in the gap:

The  contains information on the current user, user privileges (what the user is allowed to do) and quotas (how many system resources can be allocated to that user).

#### Question 2

Not yet answered

Marked out of 1.00

Flag question

Drag and drop the process types to complete the sentences:

A(n)  is a process created by another process (the parent process).

A(n)  does not accept commands from the user via the terminal, but runs commands sequentially from a file (a command procedure).

A(n)  is created when network access is requested, e.g. when the user runs a command to copy files from a remote computer. This kind of processes are terminated when the access is stopped and tracked in log files.

A(n)  is directly associated with the user. It is created when the user logs into the system, executes the commands the user enters in the terminal, and terminates as soon as the user logs out.

A(n)  is a non-interactive process that runs a single image. It is created by running an image and terminated when the image exits.

interactive process    batch process    network process    detached process    subprocess

#### Question 3

Not yet answered

Marked out of 1.00

Flag question

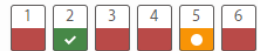
All changes made to your process using the \$ SET PROCESS command are permanent.

Select one:

True

False

### Quiz Navigation



Finish review

Started on	Monday, 28 August 2017, 11:27 PM
State	Finished
Completed on	Monday, 28 August 2017, 11:35 PM
Time taken	8 mins 20 secs
Marks	1.50/6.00
Grade	2.50 out of 10.00 (25%)

#### Question 1

Not answered

Marked out of 1.00

Flag question

Fill in the gap:

The  contains information on the current user, user privileges (what the user is allowed to do) and quotas (how many system resources can be allocated to that user).

It is something all processes have.

#### Question 2

Correct

Mark 1.00 out of 1.00

Flag question

Drag and drop the process types to complete the sentences:

A(n)  subprocess ✓ is a process created by another process (the parent process).

A(n)  batch process ✓ does not accept commands from the user via the terminal, but runs commands sequentially from a file (a command procedure).

A(n)  network process ✓ is created when network access is requested, e.g. when the user runs a command to copy files from a remote computer. This kind of processes are terminated when the access is stopped and tracked in log files.

A(n)  interactive process ✓ is directly associated with the user. It is created when the user logs into the system, executes the commands the user enters in the terminal, and terminates as soon as the user logs out.

A(n)  detached process ✓ is a non-interactive process that runs a single image. It is created by running an image and terminated when the image exits.



A(n) **detached process** is a non-interactive process that runs a single image. It is created by running an image and terminated when the image exits.

Question 3  
Incorrect  
Mark 0.00 out of 1.00  
Flag question

All changes made to your process using the \$ SET PROCESS command are permanent.

Select one:

- True **X**
- False

No, all changes are only valid until you log out.

Question 4  
Incorrect  
Mark 0.00 out of 1.00  
Flag question

Which of the following is the command to display all the processes in the system?

Select one:

- \$ SHOW PROCESSES
- \$ SHOW SYSTEM
- \$ SHOW PROCESS/ALL **X** This will show you all the information about your current process (but not a list of processes).
- \$ SHOW SYSTEM/ALL

Your answer is incorrect.

Question 5  
Partially correct  
Mark 0.50 out of 1.00  
Flag question

Drag and drop the elements of a process onto the image.



Question 5

Drag and drop the elements of a process onto the image.

Flag question

virtual address space

image

Software Context

Hardware Context

virtual address space

image

thread

This diagram represents a process with two threads that share hardware and software context.  
Your answer is partially correct.  
You have correctly selected 2.

Question 6

Incorrect  
Mark 0.00 out of 1.00

Flag question

How do you exit a subprocess and reconnect to the original process?

Select one:

- \$ LOGOUT
- \$ SET PROCESS/NOSPAWN
- \$ RETURN
- \$ EXIT ❌

When you exit a process, you log out of it.

Question 5

Drag and drop the elements of a process onto the image.

Flag question

virtual address space

Notifications

- VMSFund: Re: Temporary Mailboxes  
16 hours 52 mins ago [View full notification](#)
- VMSFund: Re: Temporary Mailboxes  
20 hours 37 mins ago [View full notification](#)
- Congratulations! You just earned a badge!  
4 days 17 hours ago [View full notification](#)

[See all](#)

This diagram represents a process with two threads that share hardware.  
Your answer is partially correct.  
You have correctly selected 2.

Question 6

Incorrect  
Mark 0.00 out of 1.00  
Flag question

How do you exit a subprocess and reconnect to the original process?

Select one:

- \$ LOGOUT
- \$ SET PROCESS/NOSPAWN
- \$ RETURN
- \$ EXIT ❌

When you exit a process, you log out of it.

### Navigation

- Dashboard
  - Site home
  - Site pages
  - My courses
    - VMSFund
      - Participants
      - Badges
      - Competencies
      - Grades
      - General
        - Announcements
        - OpenVMS Fundamentals Forum**
        - OpenVMS Fundamentals Glossary
        - OpenVMS User's Guide
        - What do you think about this course?
      - Introduction
      - Getting Started
      - The DIGITAL Command Language
      - Process Concepts
      - Directory Files
      - File Manipulations
      - File Security
      - Logical Names
      - Editing
      - Symbols
      - Communications
      - Command Procedures
      - Print and Batch Jobs
      - Networking
      - System Management I

## OpenVMS Fundamentals Forum

Ask your questions and answer questions asked by other students.

[ADD A NEW DISCUSSION TOPIC](#)

Discussion	Started by	Replies	Last post
Temporary Mailboxes	John Doe	1	Jane Doe Fri, 25 Aug 2017, 4:03 AM
Useful symbol suggestions	Jack Mitchell	4	Jack Mitchell Thu, 24 Aug 2017, 11:37 PM
Delete Files after a Specified Time	Jack Mitchell	0	Jack Mitchell Thu, 24 Aug 2017, 11:36 PM
Lexical Function to Look Up Logicals	Jack Mitchell	0	Jack Mitchell Thu, 24 Aug 2017, 11:18 PM
Writing changes to the same file	Mary Sue	2	Jack Mitchell Thu, 24 Aug 2017, 9:18 PM
Where are my symbols?	Lillian Ellison	2	Jack Mitchell Thu, 24 Aug 2017, 1:16 AM
Incorrect LOGIN.COM settings	Mary Sue	1	Jane Doe Thu, 24 Aug 2017, 1:11 AM
Recursive copying	Mary Sue	1	Jane Doe Thu, 24 Aug 2017, 1:09 AM
Mark a mail message as read	Mary Sue	1	Jane Doe Thu, 24 Aug 2017, 1:07 AM
Can't send mail to OpenVMS	John Doe	1	Jane Doe Wed, 23 Aug 2017, 5:08 AM
Find a penpal for exploring the Mail Utility	Jane Doe	3	Lillian Ellison Tue, 22 Aug 2017, 10:22 PM

## Navigation

- Dashboard
  - Site home
  - Site pages
- My courses
  - VMSFund
    - Participants
    - Badges
    - Competencies
    - Grades
  - General
    - Announcements
    - OpenVMS Fundamentals Forum
      - Temporary Mailboxes**
      - OpenVMS Fundamentals Glossary
      - OpenVMS User's Guide
    - What do you think about this course?
  - Introduction
  - Getting Started
  - The DIGITAL Command Language
  - Process Concepts
  - Directory Files
  - File Manipulations
  - File Security
  - Logical Names
  - Editing
  - Symbols
  - Communications
  - Command Procedures
  - Print and Batch Jobs
  - Networking
  - System Management

## OpenVMS Fundamentals Forum

### Temporary Mailboxes

Subscribed

Useful symbol suggestions  
Display replies in nested form

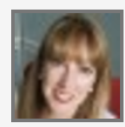


#### Temporary Mailboxes

by John Doe - Friday, 25 August 2017, 3:50 AM

My SHOW PROCESS/PRIVILEGES lists TMPMBX, "may create temporary mailbox". What does this mean?

[Permalink](#) | [Reply](#)



#### Re: Temporary Mailboxes

by Jane Doe - Tuesday, 29 August 2017, 9:56 PM

I believe this can help: <http://h41379.www4.hpe.com/openvms/journal/v9/mailboxes.pdf>.

In short, temporary mailboxes are used for inter-process communication. The privilege that you have mentioned is usually granted to regular users, because it is hard to do anything it OpenVMS if you don't have this privilege.

[Permalink](#) | [Show parent](#) | [Reply](#)

Useful symbol suggestions

### Navigation

- Dashboard
  - Site home
  - Site pages
- My courses
  - VMSFund
    - Participants
      - Course blogs
      - John Doe
      - Jack Mitchell**
    - Badges
    - Competencies
    - Grades
      - General
      - Introduction
      - Getting Started
      - The DIGITAL Command Language
      - Process Concepts
      - Directory Files
      - File Manipulations
      - File Security
      - Logical Names
      - Editing
      - Symbols
      - Communications
      - Command Procedures
      - Print and Batch Jobs
      - Networking
    - System Management I







## Jack Mitchell

Message Add to your contacts

### Badges

Badges from VSI Training Center:

-  Process Beginner
-  Security Aware
-  Lord of the Files
-  DCL Guru

### Course details

Course profiles

- OpenVMS Fundamentals
- System Management I - Essentials

Roles

- Student

### Miscellaneous

- [View all blog entries](#)
- [Forum posts](#)
- [Forum discussions](#)

### Login activity

Last access to course

Friday, 25 August 2017, 3:03 AM (1 hour 5 mins)



## Recipient details

Name Jack Mitchell

## Issuer details

Issuer name VSI

## Badge details

Name Process Beginner

Description This badge is awarded to students who have completed Fundamentals level Process Concepts activities.

Course OpenVMS Fundamentals

Criteria Users are awarded this badge when they complete the following requirement:

- ALL of the following activities are completed:
  - "Lesson - Process Concepts Video Lessons"
  - "Lesson - Process Concepts Lab Guide"
  - "Quiz - Process Concepts Quiz"

## Badge expiry

Date issued Friday, 25 August 2017, 1:48 AM

Evidence This badge was issued for completing:

- ALL of the following activities are completed:
  - "Lesson - Process Concepts Video Lessons"
  - "Lesson - Process Concepts Lab Guide"
  - "Quiz - Process Concepts Quiz"

## Navigation

- Dashboard
  - Site home
  - Site pages
- My courses
  - VMSFund
    - Participants
    - Badges
    - Competencies
    - Grades
    - General
    - Introduction
    - Getting Started
    - The DIGITAL Command Language
    - Process Concepts
      - Process Concepts Video Lessons
      - Process Concepts Lab Guide
      - Process Concepts Quiz**
    - Directory Files
    - File Manipulations
    - File Security
    - Logical Names
    - Editing
    - Symbols
    - Communications
    - Command Procedures
    - Print and Batch Jobs
    - Networking
    - System Management I

## Process Concepts Quiz

Test your knowledge of process concepts

Grading method: Highest grade

### Summary of your previous attempts


Attempt	State	Marks / 6.00	Grade / 10.00	Review
1	Finished Submitted Friday, 25 August 2017, 3:59 AM	4.00	6.67	<a href="#">Review</a>
2	Finished Submitted Friday, 25 August 2017, 4:13 AM	6.00	10.00	<a href="#">Review</a>

**Highest grade: 10.00 / 10.00.**

**RE-ATTEMPT QUIZ**



### Notifications

 Congratulations! You just earned a badge!  
1 min 11 secs ago [View full notification](#)

[See all](#)

## Navigation

- Dashboard
  - Site home
  - Site pages
- My courses
  - VMSFund
    - Participants
    - Badges
    - Competencies
    - Grades
    - General
    - Introduction
    - Getting Started
    - The DIGITAL Command Language
    - Process Concepts
      - Process Concepts Video Lessons
      - Process Concepts Lab Guide
      - Process Concepts Quiz**
    - Directory Files
    - File Manipulations
    - File Security
    - Logical Names
    - Editing
    - Symbols
    - Communications
    - Command Procedures
    - Print and Batch Jobs
    - Networking
    - System Management I

## Process Concepts Quiz

Test your knowledge of process concepts

Grading method

### Summary of your previous attempts

Attempt	State	Grade	Action
1	Finished Submitted Friday, 25 August 2017, 3:59 AM	6.67	<a href="#">Review</a>
2	Finished Submitted Friday, 25 August 2017, 4:13 AM	10.00	<a href="#">Review</a>



**Highest grade: 10.00 / 10.00.**

**RE-ATTEMPT QUIZ**

### Navigation

- Dashboard
  - Site home
  - Site pages
- My courses
  - VMSFund
  - System Management I

## Notifications

<p> Congratulations! You just earned a badge! 1 min 54 secs ago</p>	<p> Congratulations! You just earned a badge! 1 min 54 secs ago</p> <p>You have been awarded the badge "Process Beginner!"</p> <p>More information about this badge can be found on the <a href="#">Process Beginner</a> badge information page.</p> <p>You can manage and download the badge from your <a href="#">Manage badges</a> page.</p> <p>A new <a href="#">video</a> was unlocked!</p> <p>Go to:</p>
--	--

### Lesson Menu

- Process Context (13:14)
- Interactive Process (6:03)
- Batch Process (6:57)
- Detached Process (2:34)
- Subprocess (10:17)
- Process Information (7:14)
- Changing Process Prompt (1:47)

### Navigation

- Dashboard
  - Site home
  - Site pages
- My courses
  - VMSFund
    - Participants
    - Badges
    - Competencies
    - Grades
    - General
    - Introduction
    - Getting Started
    - The DIGITAL Command Language
    - Process Concepts
      - Process Concepts Video Lessons**
      - Process Concepts Lab Guide
      - Process Concepts Quiz
    - Directory Files

## Process Concepts Video Lessons

EXTRA: Process State Details (4:41)

The video player interface features a white header with the 'vms Software' logo on the left and 'OpenVMS Fundamentals' on the right. The main content area is black with the title 'Process State Details' centered in white. A play button is visible in the top left corner of the video frame.

FINISH

Sumname: All A B C D E F G H I J K L M N O P Q R S T U V W X Y Z

Criteria group		Activities																																									
Aggregation method		All																																									
Criteria																																											
First name / Surname	Email address	Introduction Video	Introduction Quiz	Getting Started Lab Guide	Getting Started Quiz	DCL Video Lessons	DCL and Terminal Lab Guide	The Help Utility and Error ...	Recalling DCL Commands Lab ...	DCL Quiz	Process Concepts Video Lessons	Process Concepts Lab Guide	Process Concepts Quiz	Directory Files Video Lessons	Directory Files Quiz	Directory Files Lab Guide	File Manipulations Video ...	File Manipulations Quiz	File Manipulations Lab Guide	File Security Video Lessons	File Security Quiz	File Security Lab Guide	Logical Names Video Lessons	Logical Names Quiz	Logical Names Lab Guide	Editing Video Lessons	EVE Quiz	EVE Lab Guide	Symbols Video Lessons	Symbols Lab Guide	Symbols Quiz	Communications Video Lessons	Communications Quiz	MAIL Utility Lab Guide	PHONE Utility Lab Guide	Command Procedures Video ...	Command Procedures Quiz	Command Procedures Lab Guide					
John Doe	lumberjackmitchell@gmail.com	<input type="checkbox"/>	<input type="checkbox"/>	<input type="checkbox"/>	<input type="checkbox"/>	<input type="checkbox"/>	<input type="checkbox"/>	<input type="checkbox"/>	<input type="checkbox"/>	<input type="checkbox"/>	<input checked="" type="checkbox"/>	<input checked="" type="checkbox"/>	<input checked="" type="checkbox"/>	<input type="checkbox"/>	<input type="checkbox"/>	<input type="checkbox"/>	<input checked="" type="checkbox"/>	<input type="checkbox"/>	<input type="checkbox"/>	<input type="checkbox"/>	<input type="checkbox"/>	<input type="checkbox"/>	<input type="checkbox"/>	<input type="checkbox"/>	<input type="checkbox"/>	<input type="checkbox"/>	<input type="checkbox"/>	<input type="checkbox"/>	<input type="checkbox"/>	<input type="checkbox"/>	<input type="checkbox"/>	<input type="checkbox"/>	<input type="checkbox"/>	<input type="checkbox"/>	<input type="checkbox"/>	<input type="checkbox"/>	<input type="checkbox"/>	<input type="checkbox"/>	<input type="checkbox"/>	<input type="checkbox"/>			
Lillian Ellison	flythreebucksfly@gmail.com	<input type="checkbox"/>	<input type="checkbox"/>	<input type="checkbox"/>	<input type="checkbox"/>	<input type="checkbox"/>	<input checked="" type="checkbox"/>	<input type="checkbox"/>	<input type="checkbox"/>	<input type="checkbox"/>	<input type="checkbox"/>	<input type="checkbox"/>	<input type="checkbox"/>	<input type="checkbox"/>	<input type="checkbox"/>	<input type="checkbox"/>	<input type="checkbox"/>	<input type="checkbox"/>	<input type="checkbox"/>	<input type="checkbox"/>	<input type="checkbox"/>	<input type="checkbox"/>	<input type="checkbox"/>	<input type="checkbox"/>	<input type="checkbox"/>	<input type="checkbox"/>	<input type="checkbox"/>	<input type="checkbox"/>	<input type="checkbox"/>	<input type="checkbox"/>	<input type="checkbox"/>	<input type="checkbox"/>	<input type="checkbox"/>	<input type="checkbox"/>	<input type="checkbox"/>	<input type="checkbox"/>	<input type="checkbox"/>	<input type="checkbox"/>	<input type="checkbox"/>	<input type="checkbox"/>	<input type="checkbox"/>	<input type="checkbox"/>	
Jack Mitchell	darya.zelenina@gmail.com	<input checked="" type="checkbox"/>	<input checked="" type="checkbox"/>	<input checked="" type="checkbox"/>	<input checked="" type="checkbox"/>	<input checked="" type="checkbox"/>	<input checked="" type="checkbox"/>	<input checked="" type="checkbox"/>	<input checked="" type="checkbox"/>	<input checked="" type="checkbox"/>	<input checked="" type="checkbox"/>	<input checked="" type="checkbox"/>	<input checked="" type="checkbox"/>	<input checked="" type="checkbox"/>	<input checked="" type="checkbox"/>	<input checked="" type="checkbox"/>	<input checked="" type="checkbox"/>	<input checked="" type="checkbox"/>	<input checked="" type="checkbox"/>	<input type="checkbox"/>	<input type="checkbox"/>	<input type="checkbox"/>	<input type="checkbox"/>	<input type="checkbox"/>	<input checked="" type="checkbox"/>	<input checked="" type="checkbox"/>	<input type="checkbox"/>	<input type="checkbox"/>	<input type="checkbox"/>	<input type="checkbox"/>	<input type="checkbox"/>	<input type="checkbox"/>	<input type="checkbox"/>	<input type="checkbox"/>	<input type="checkbox"/>	<input type="checkbox"/>	<input checked="" type="checkbox"/>	<input checked="" type="checkbox"/>	<input checked="" type="checkbox"/>	<input checked="" type="checkbox"/>	<input checked="" type="checkbox"/>	<input checked="" type="checkbox"/>	
Dennis O'Brien	dennis.obrien@bruden.com	<input type="checkbox"/>	<input type="checkbox"/>	<input type="checkbox"/>	<input type="checkbox"/>	<input type="checkbox"/>	<input type="checkbox"/>	<input type="checkbox"/>	<input type="checkbox"/>	<input type="checkbox"/>	<input type="checkbox"/>	<input type="checkbox"/>	<input type="checkbox"/>	<input type="checkbox"/>	<input type="checkbox"/>	<input type="checkbox"/>	<input type="checkbox"/>	<input type="checkbox"/>	<input type="checkbox"/>	<input type="checkbox"/>	<input type="checkbox"/>	<input type="checkbox"/>	<input type="checkbox"/>	<input type="checkbox"/>	<input type="checkbox"/>	<input type="checkbox"/>	<input type="checkbox"/>	<input type="checkbox"/>	<input type="checkbox"/>	<input type="checkbox"/>	<input type="checkbox"/>	<input type="checkbox"/>	<input type="checkbox"/>	<input type="checkbox"/>	<input type="checkbox"/>	<input type="checkbox"/>	<input type="checkbox"/>	<input type="checkbox"/>	<input type="checkbox"/>	<input type="checkbox"/>	<input type="checkbox"/>	<input type="checkbox"/>	
Mary Sue	kammerer001@gmail.com	<input type="checkbox"/>	<input type="checkbox"/>	<input type="checkbox"/>	<input type="checkbox"/>	<input type="checkbox"/>	<input type="checkbox"/>	<input type="checkbox"/>	<input type="checkbox"/>	<input type="checkbox"/>	<input type="checkbox"/>	<input type="checkbox"/>	<input type="checkbox"/>	<input type="checkbox"/>	<input type="checkbox"/>	<input type="checkbox"/>	<input type="checkbox"/>	<input type="checkbox"/>	<input type="checkbox"/>	<input type="checkbox"/>	<input type="checkbox"/>	<input type="checkbox"/>	<input type="checkbox"/>	<input type="checkbox"/>	<input type="checkbox"/>	<input type="checkbox"/>	<input type="checkbox"/>	<input type="checkbox"/>	<input type="checkbox"/>	<input type="checkbox"/>	<input type="checkbox"/>	<input type="checkbox"/>	<input type="checkbox"/>	<input type="checkbox"/>	<input type="checkbox"/>	<input type="checkbox"/>	<input type="checkbox"/>	<input type="checkbox"/>	<input type="checkbox"/>	<input type="checkbox"/>	<input type="checkbox"/>	<input type="checkbox"/>	<input type="checkbox"/>
Gerrit Woertman	Gerrit.Woertman@vmsconsultancy.com	<input type="checkbox"/>	<input type="checkbox"/>	<input type="checkbox"/>	<input type="checkbox"/>	<input type="checkbox"/>	<input type="checkbox"/>	<input type="checkbox"/>	<input type="checkbox"/>	<input type="checkbox"/>	<input type="checkbox"/>	<input type="checkbox"/>	<input type="checkbox"/>	<input type="checkbox"/>	<input type="checkbox"/>	<input type="checkbox"/>	<input type="checkbox"/>	<input type="checkbox"/>	<input type="checkbox"/>	<input type="checkbox"/>	<input type="checkbox"/>	<input type="checkbox"/>	<input type="checkbox"/>	<input type="checkbox"/>	<input type="checkbox"/>	<input type="checkbox"/>	<input type="checkbox"/>	<input type="checkbox"/>	<input type="checkbox"/>	<input type="checkbox"/>	<input type="checkbox"/>	<input type="checkbox"/>	<input type="checkbox"/>	<input type="checkbox"/>	<input type="checkbox"/>	<input type="checkbox"/>	<input type="checkbox"/>	<input type="checkbox"/>	<input type="checkbox"/>	<input type="checkbox"/>	<input type="checkbox"/>	<input type="checkbox"/>	<input type="checkbox"/>

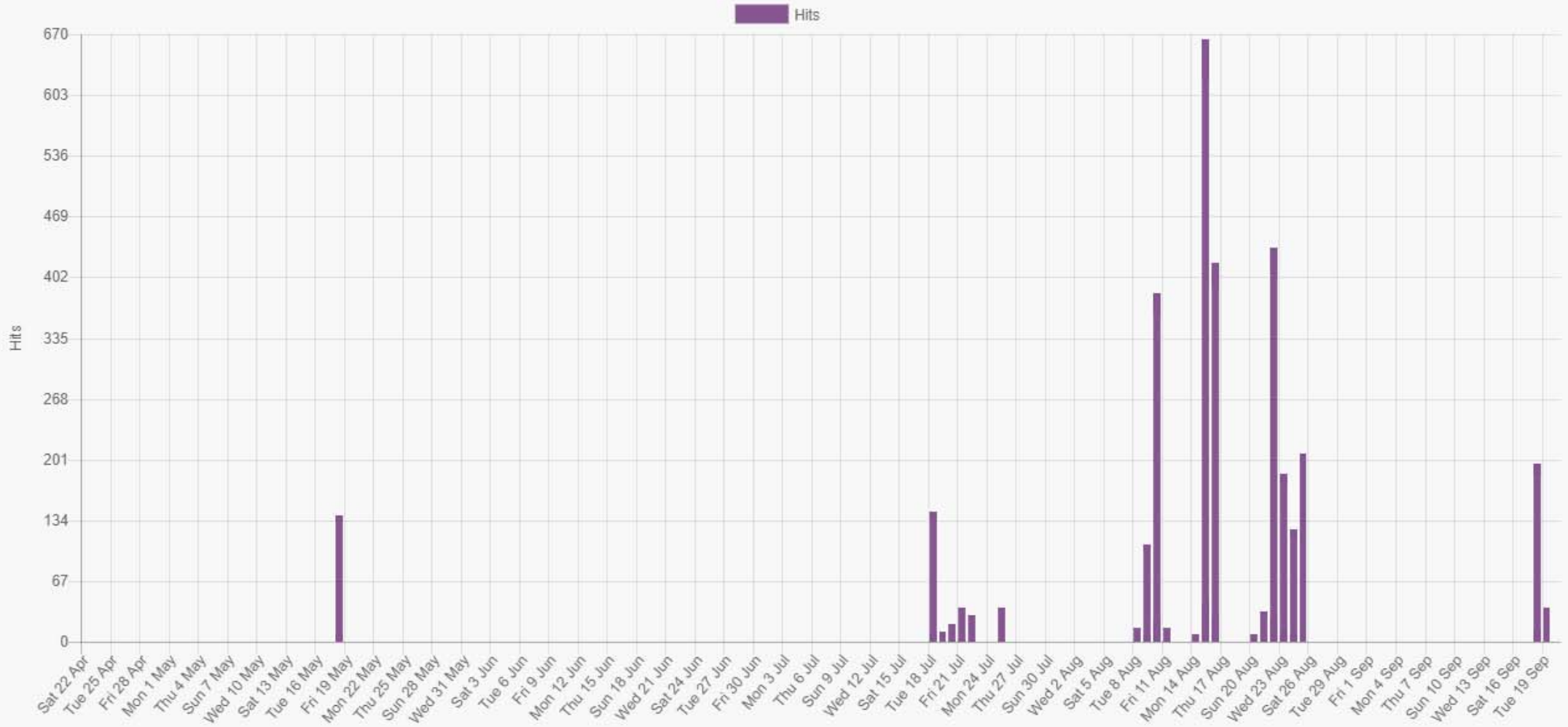
First name: All A B C D E F G H I J K L M N O P Q R S T U V W X Y Z

Sumname: All A B C D E F G H I J K L M N O P Q R S T U V W X Y Z

Select log reader

Standard log ▾

Hits on VSI-MOO by Jack Mitchell



Grade item	Grade	Contribution to course total
📁 OpenVMS Fundamentals		
📄 Introduction Quiz	10.00	7.14 %
📄 Getting Started Quiz	10.00	7.14 %
📄 DCL Quiz	8.75	6.25 %
📄 Process Concepts Quiz	10.00	7.14 %
📄 Directory Files Quiz	10.00	7.14 %
📄 File Manipulations Quiz	9.00	6.43 %
📄 File Security Quiz	8.00	5.71 %
📄 Logical Names Quiz	8.00	5.71 %
📄 EVE Quiz	8.89	6.35 %
📄 Symbols Quiz	10.00	7.14 %
📄 Communications Quiz	8.57	6.12 %
📄 Command Procedures Quiz	8.18	5.84 %
📄 Print and Batch Jobs Quiz	8.57	6.12 %
📄 Networking Quiz	10.00	7.14 %
📊 Course total Weighted mean of grades.	91.40	-



## Jack Mitchell

[Message](#) [+ Add to your contacts](#)



### VMSFund -> OpenVMS Fundamentals Forum -> Delete Files After A Specified Time

by Jack Mitchell - Friday, 25 August 2017, 2:36 AM

I want to set up a command procedure that deletes files that have not been modified for more than a month. I can find these files with `DIRECTORY /MODIFIED/SINCE`, but how do I get the files and delete them?

[Permalink](#) | [Edit](#) | [Delete](#)  
[See this post in context](#)



### VMSFund -> OpenVMS Fundamentals Forum -> Lexical Function To Look Up Logicals

by Jack Mitchell - Friday, 25 August 2017, 2:18 AM

Is there a lexical function to translate a logical name into what it stands for?

[Permalink](#) | [Edit](#) | [Delete](#)  
[See this post in context](#)



### VMSFund -> OpenVMS Fundamentals Forum -> Useful Symbol Suggestions

by Jack Mitchell - Tuesday, 22 August 2017, 3:02 AM

What are some useful symbols you have defined in your LOGIN.COM? Mine are:

# What's next?

- Completely automatic sign up
- More courses (System Management II, Programming Features, OpenVMS Internals, others)
- An informational course about OpenVMS and forum that anyone can access
- Certification



# Outcomes



more  
students



better  
courses



community  
support



OpenVMS  
certification